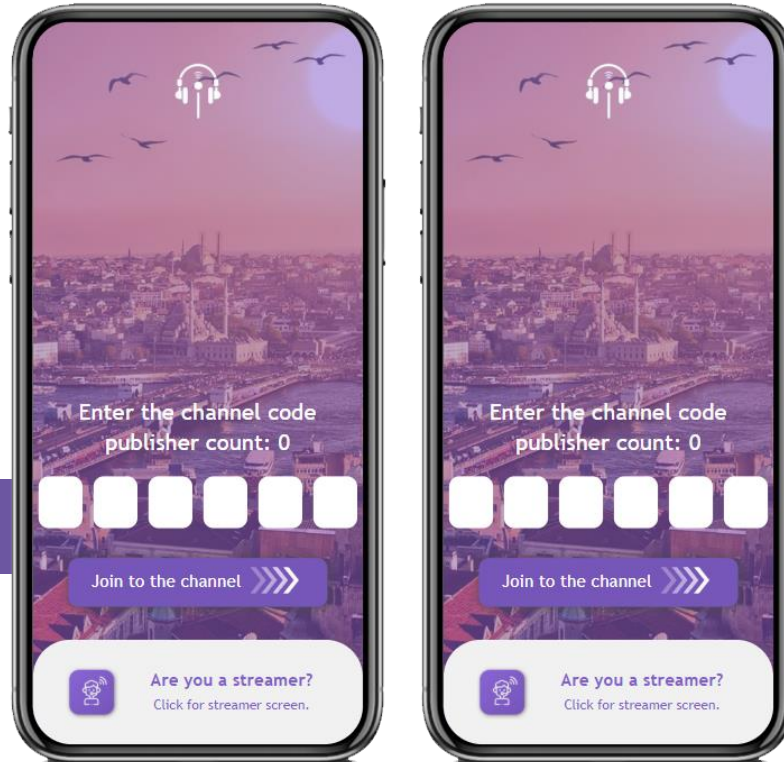


guide.fm

MIKAIL KARACA

HOW IT WORKS?



Guide's Phone

Tourist's Phone

SOUND LATENCY/DELAY

You don't even able to understand the delay.

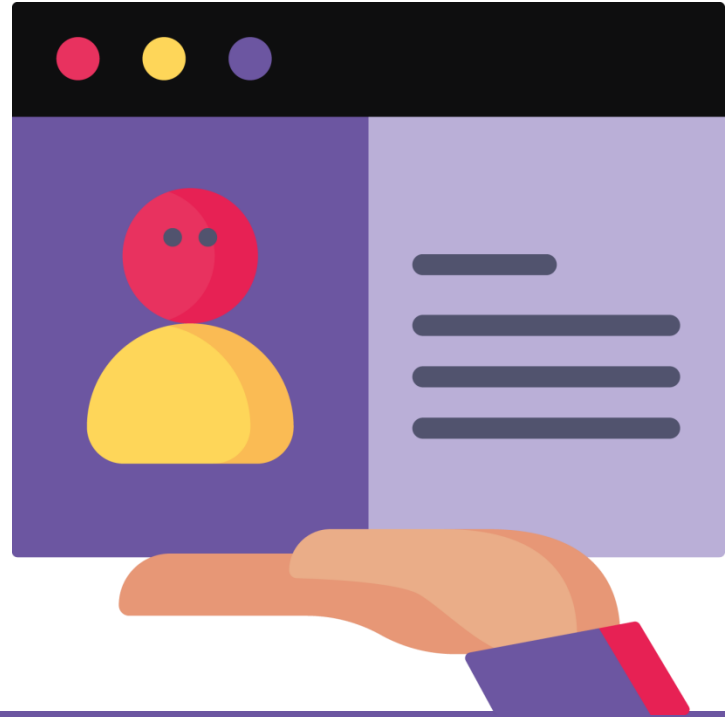
<0,2 sec



DATA CONSUMPTION

Data consumption is around 10mb/h
That's less than 1 min youtube video

10mb/h



BATTERY CONSUMPTION



No Gps
Tracking



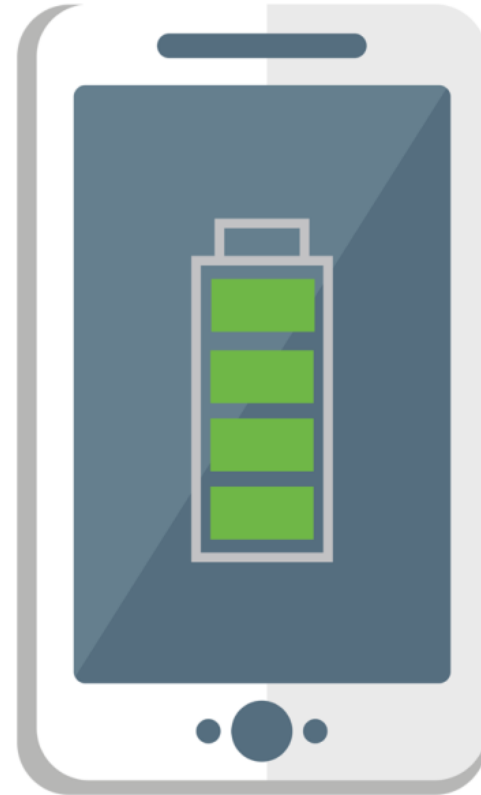
No Chat



No Image
Sharing



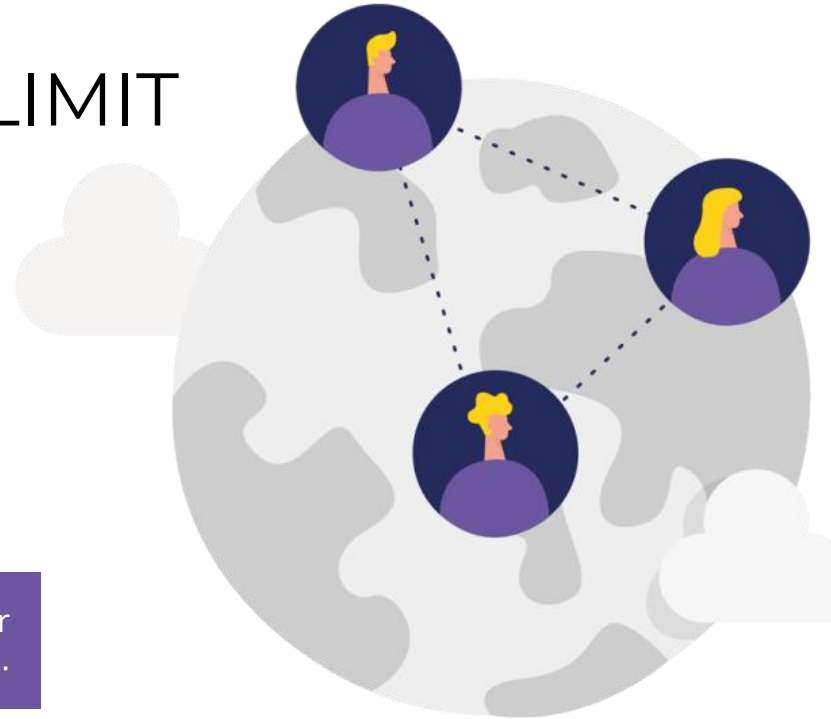
No File
Sharing



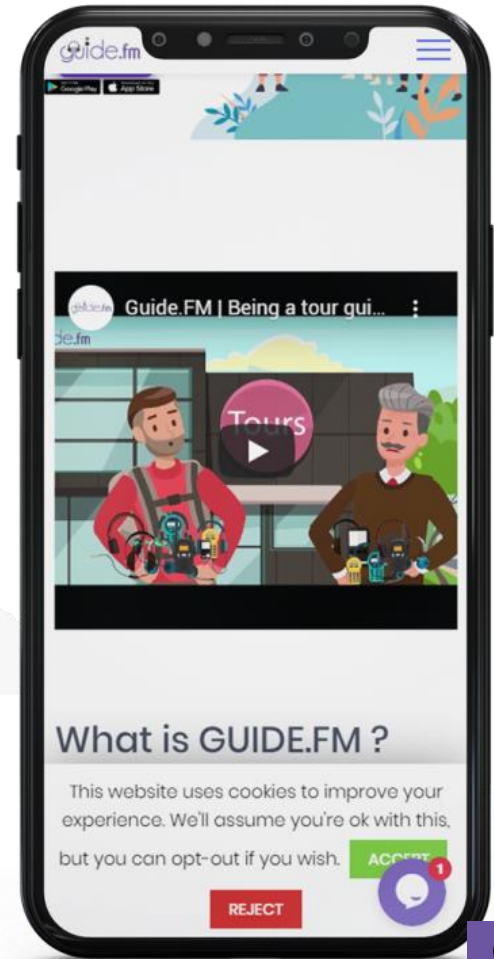
4-5%

Battery
Consumption

NO LOCATION LIMIT

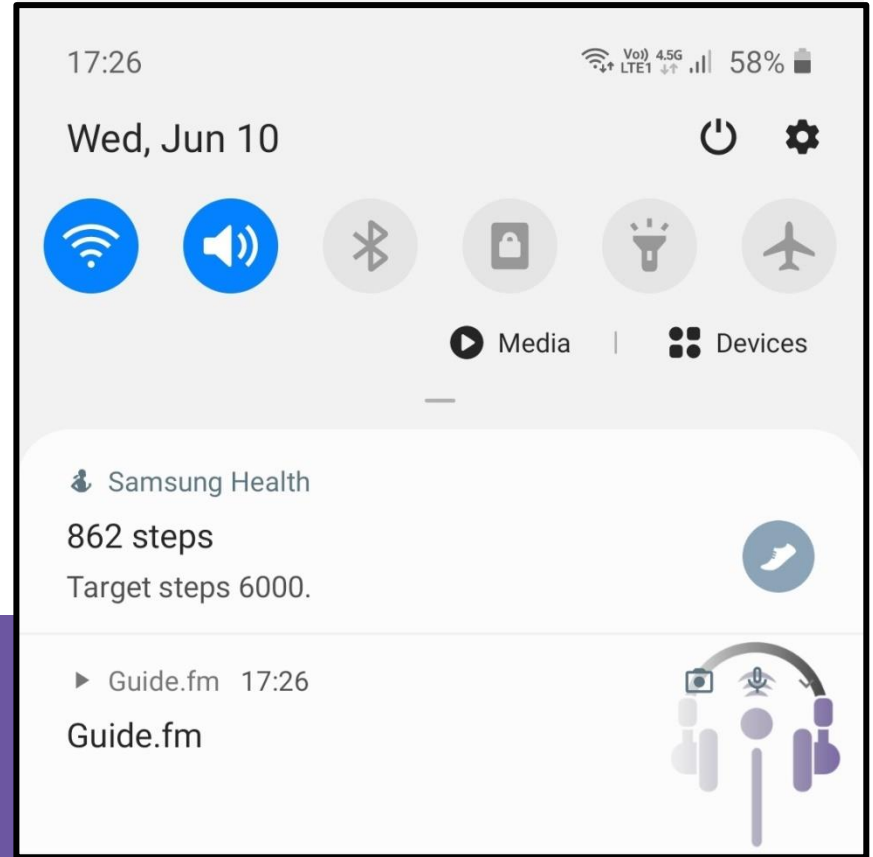


Guide.fm can be used all over the world.



WORKS AT THE BACKGROUND

Guide.fm can work at the background. So guide and tourists can take photo during the tour or can use all the features of their phone. It's like listening music at the background.



LANGUAGES

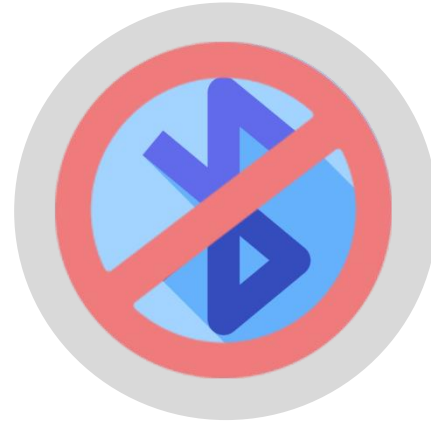
App interface is in;

- English
- French
- Spanish
- German
- Italian
- Russian



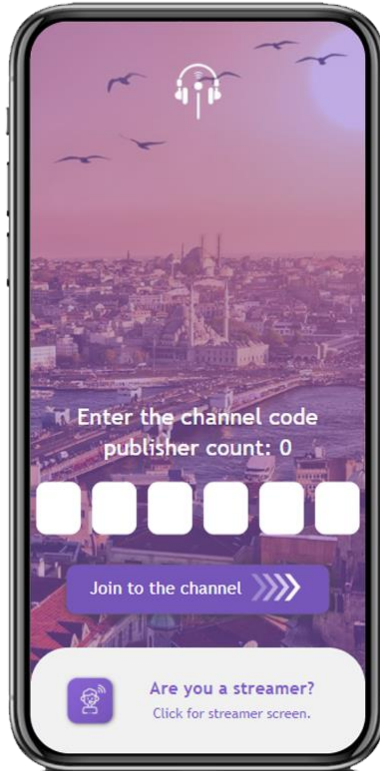
SOUND TRANSMITTING TECHNOLOGY

You can make connection via internet or wifi. We don't have old bluetooth technology.



TOURISTS

Tourist's Screen



Tourists don't pay and don't register. They only have 1 screen.

LUNCH BREAK OR ANOTHER BREAK

Even if you lose your connection, code wouldn't change.

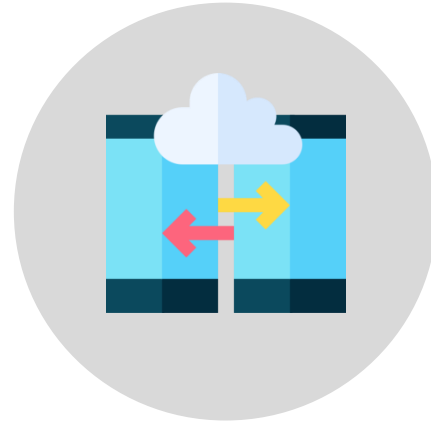


**24
Hours**



TRANSFERRING CREDITS

Tour guides can transfer credits among each others.



NO NEED FOR SPECIAL EQUIPMENT

No need for microphone. You can use Guide.fm
with classic headphone

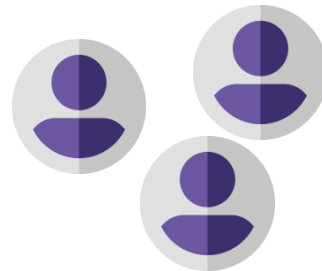


NO GROUP LIMIT

You can guide to 2 tourists or 2000 tourists
at the same time.



x2



x200

WORKS ALSO WITHOUT INTERNET

Even if nobody have internet access, just connect to wifi modem and you can continue guiding.



FREE 100
CREDITS

Price for each tourist is 0.5€

support@guide.fm

GT20

%20 discount



THANK YOU!